



Technical Bulletin

Subject: Rear Child Restraint Anchorages

Group: 69

Number: 97-01

Model(s): All models

1979 ►

Date: July 17, 1997

This Technical Bulletin supersedes the following Technical Bulletins:

Group	Bulletin No.	Date
68	87-06	07/01/87
68	87-07	07/01/87
68	91-04	06/30/91
68	91-05	07/31/91
68	91-06	07/31/91

When installing a child restraint system that requires tethering, install the anchors as described in this Technical Bulletin.

Note:

Models not specifically covered by this Technical Bulletin have either factory-installed rear child restraint tether anchorage provisions or cannot be fitted for such anchorages.

Child Seat Basics

All 50 states, the District of Columbia and Canadian provinces have child passenger protection laws which require small children, usually up to four years of age, to ride in an approved child car safety seat regardless of whether they are in a front or rear seat. The safest way to transport young children is in a child safety seat installed in the rear seat of the vehicle.

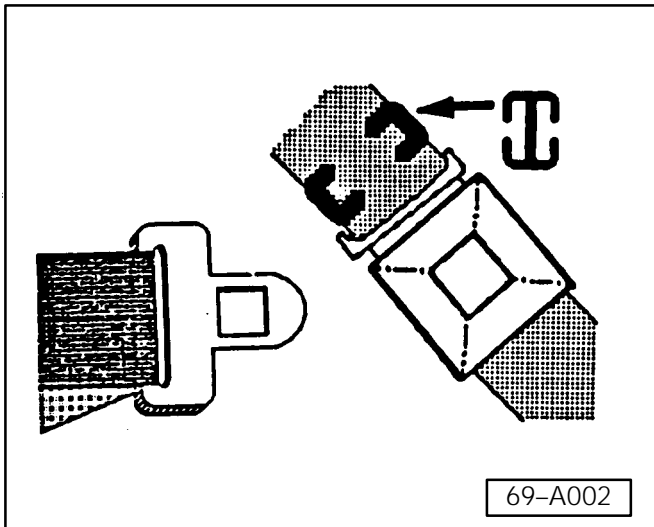
To correctly restrain children a child safety seat must be used from birth until the child is large enough to correctly fit in the vehicle's safety belts — usually at five to seven years of age and weighing 50 to 60 pounds. See the attached NHTSA Size and Weight Guide for reference.

Cars and Child Safety Seats – Do They Fit Together?

All child safety seats are not compatible with all cars, seats, or restraint systems in cars. Make certain that the child safety seat fits the car and seating position in which it will be used.

Audi vehicles equipped with 3-point belts in the front passenger seat and both rear outward seat positions (vehicles without airbags) require a locking clip for the installation of a child safety seat.

The locking clip comes with your child seat when new. For additional locking clips contact the child seat manufacturer.



Air Bags

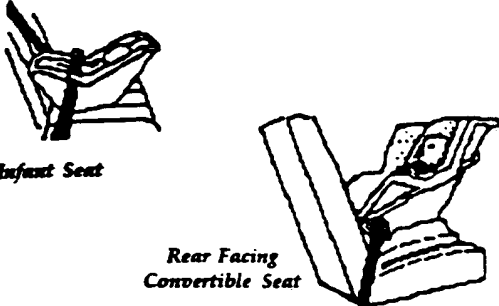
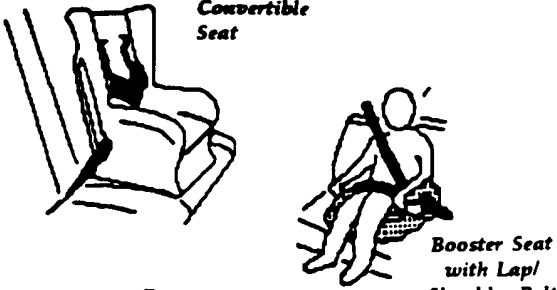
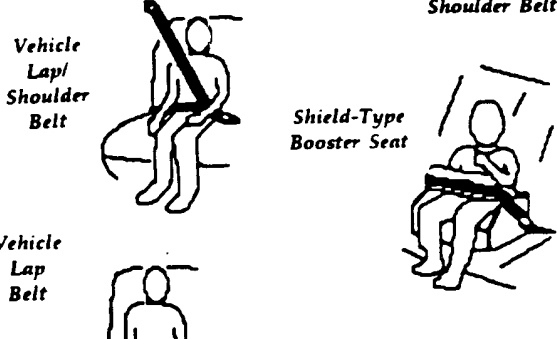

Never install a rearward facing child seat or infant carrier on the front passenger seat. See the appropriate Audi owner's manual.

Child Seat Shopping Guide

A shopping guide for child safety seats is available free of charge from:

National Highway Traffic Safety
Administration NTS-13
400 7th Street SW
Washington, DC 20590
Phone: 800 424-9399

Size and Weight Guide for Child Safety Seats

<p>From Birth to 9 – 12 Months or 20 Pounds</p>	<p>Use an infant or convertible seat facing the rear</p>	 <p>Infant Seat</p> <p>Rear Facing Convertible Seat</p>
<p>9 – 12 Months or 20 Pounds to 4 Years or 40 Pounds</p>	<p>Use a convertible or toddler seat</p>	 <p>Convertible Seat</p> <p>Booster Seat with Lap/Shoulder Belt</p>
<p>4 Years or 40 Pounds to 8 Years or 70 Pounds</p>	<p>Keep children in convertible or toddler seats as long as they will fit</p>	 <p>Vehicle Lap/Shoulder Belt</p> <p>Shield-Type Booster Seat</p>
<p><i>When they have outgrown the convertible or toddler seat:</i></p> <ul style="list-style-type: none"> ● <i>If the vehicle has a lap/shoulder belt in the rear seat, use a booster seat that positions the lap/shoulder belt correctly — secures the lap belt across the child's hips and positions the shoulder belt so it does not cross the face or the front of the neck.</i> <i>OR:</i> ● <i>Use the rear lap/shoulder belt alone IF it fits properly — does not cross the face or neck and fits across the child's hips and does not ride up across the stomach.</i> ● <i>If no rear lap/shoulder belt is available, use a shield-type booster seat restrained by the vehicle lap belt.</i> ● <i>If no other type of restraint is available, use the lap belt, positioned low on the hips and adjusted snugly.</i> 		 <p>Vehicle Lap Belt</p>
<p>8 Years and Older or 70 Pounds or More</p>	<p>Use the protection system that is in the vehicle</p>	

Note: Ages and weights approximate. Manufacturer's instructions should be consulted for exact figures. Use only safety seats labeled: "This child restraint system conforms to all applicable Federal motor vehicle safety standards" and has a stamp of manufacturing after January 1, 1981.

Reprinted from AUTOFACTS, U.S. Department of Transportation, National Highway Traffic Safety Administration

4000S, 4000S Quattro, Coupe GT, Quattro, 5000S, 5000CD Turbo, 5000 Avant (Canada only)

Audi 4000 and 5000 models, beginning in October 1985 (running change) were equipped with three anchoring points and one anchoring fixture.

Coupe GT and Quattro (type 857) models began model year 1986 with a running change to the same three anchoring points/one anchoring fixture.

For installation of anchoring points/fixtures into 4000 and 5000 models produced prior to October 1985 and for installation of additional fixtures refer to the appropriate procedure for each model on the following pages.

For installation of anchoring points/fixtures into all other models and US models, refer to the appropriate procedure for each model on the following pages.

Note:

The following vehicles cannot have anchoring fixtures installed as they lack the production weld nuts:

- ◆ *Coupe GT and Quattro (type 857):
Prior to model year 1986 (fixtures installed beginning with VIN 85 GA 050 91B as a running change)*
- ◆ *5000 Avant: Vehicles produced prior to October 1985*
- ◆ *Audi Cabriolet (all years): Due to the complexity of a retrofit the installation of anchoring fixture(s) in this model is not recommended.*

4000S/4000S Quattro

October 1985 ►
(Running production change)

Note:

These vehicles have a mounting support under the hat shelf installed in production (shown in heavy black line).

A - Anchor fixture assembly

- ◆ Bracket, Part No. 443 887 269 and following parts required:

1 - Blanking cap

- ◆ Part No. 443 887 301B 01C, P21

2 - Hex head bolt

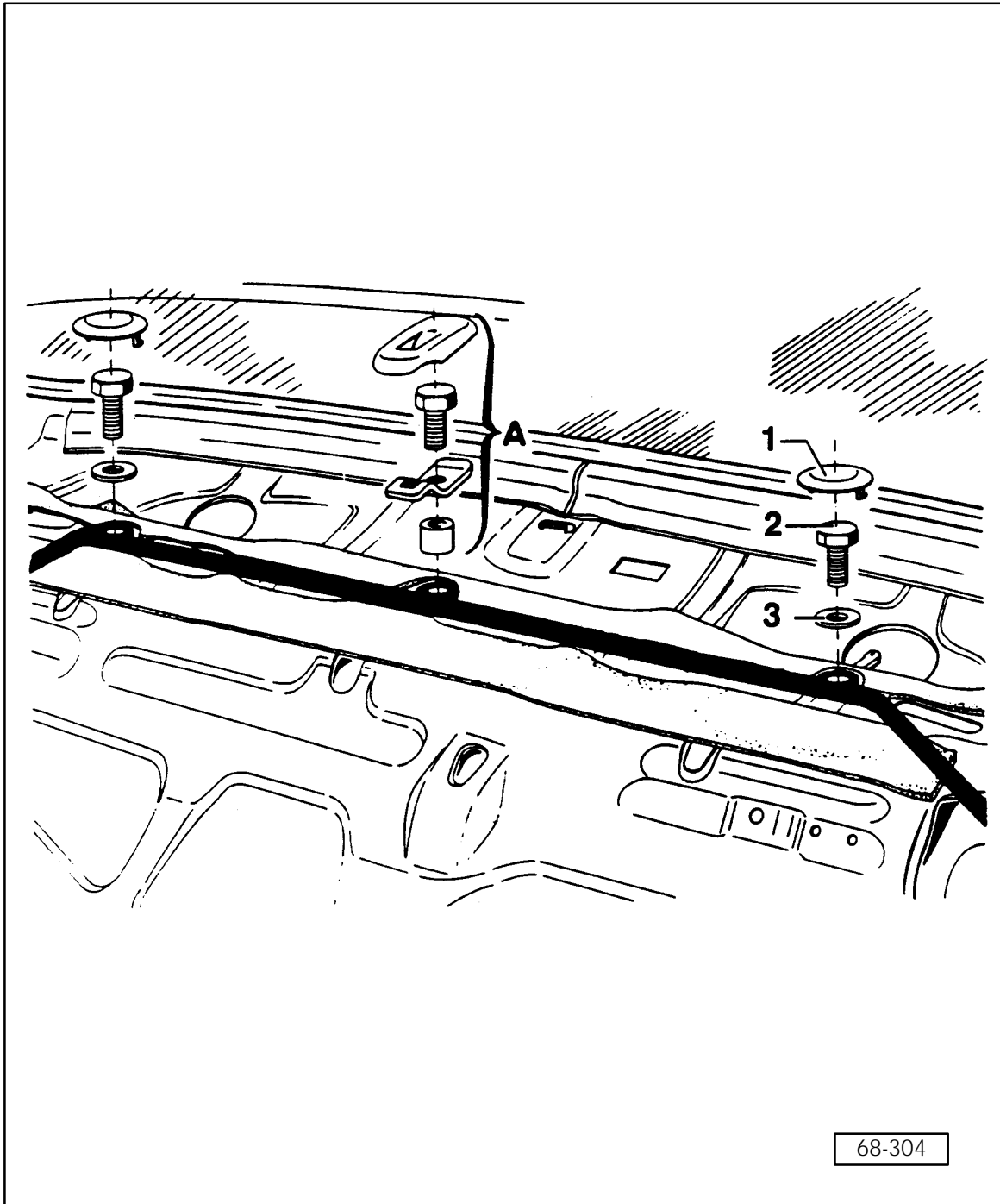
- ◆ Part No. N 010 242 22
- ◆ Tightening torque: 24 Nm ± 4 Nm
18 ± 2 ft lb)

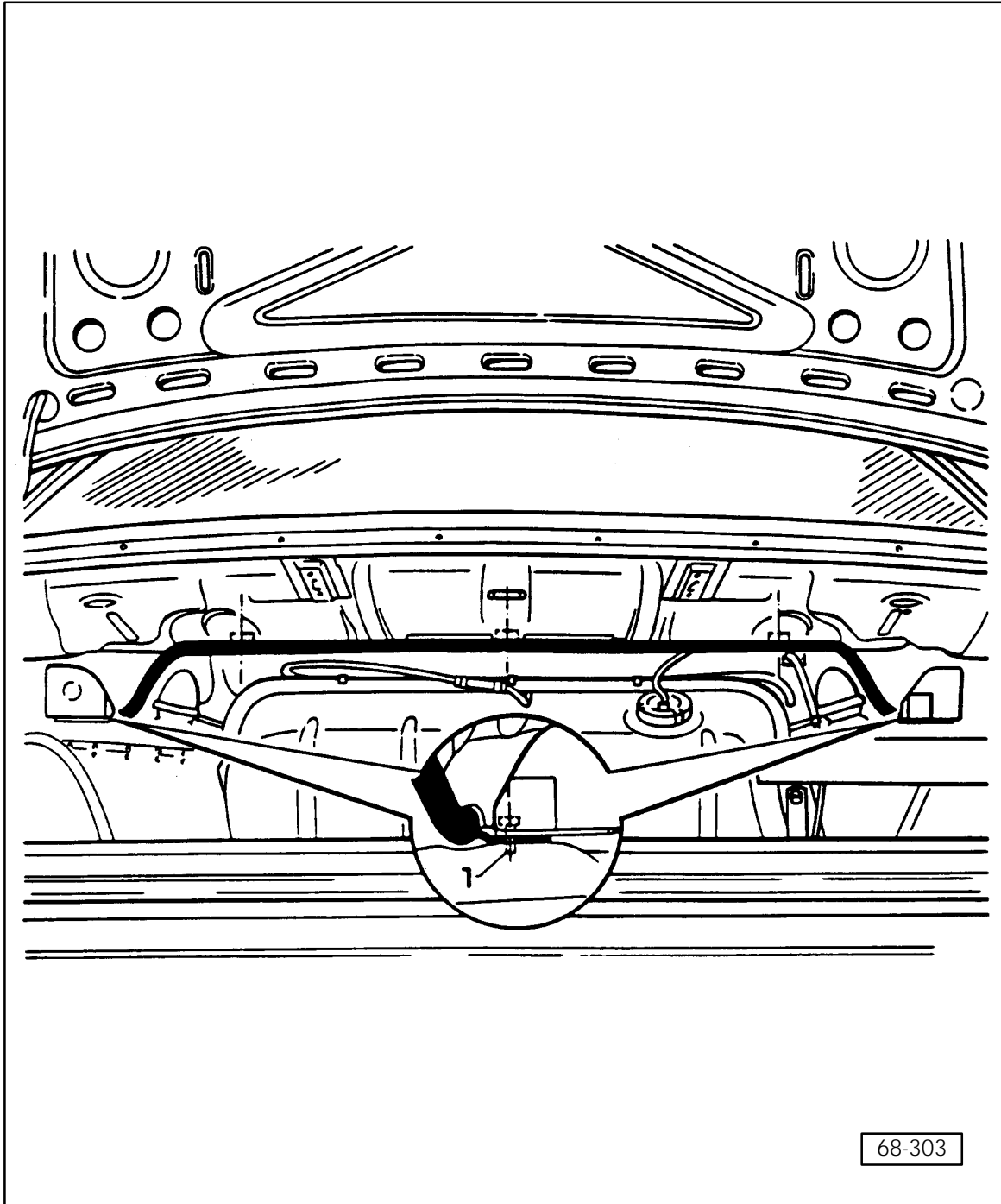
3 - Washer

- ◆ Part No. 810 019 829

To add additional fixtures (up to a maximum of three):

- Remove blanking cap -1-, bolts -2- and washer -3-.
- Cut a 24 mm (1.0 in.) hole in carpeting over desired anchor location.
- Assemble anchoring fixture as shown, pointing toward front of vehicle (also ⇒ page 69-9).





68-303

4000S

August 1979 ► October 1985
(Retrofit)

Install mounting support, see page 69-5

- Install hex bolts -1- (5 mm [3/16 in.] longer than production bolts) in belt retractor
- ◆ Tightening torque: 55 ± 5 Nm
(41 ± 4 ft lb)

To install anchoring fixture: ⇒ procedure on previous page.

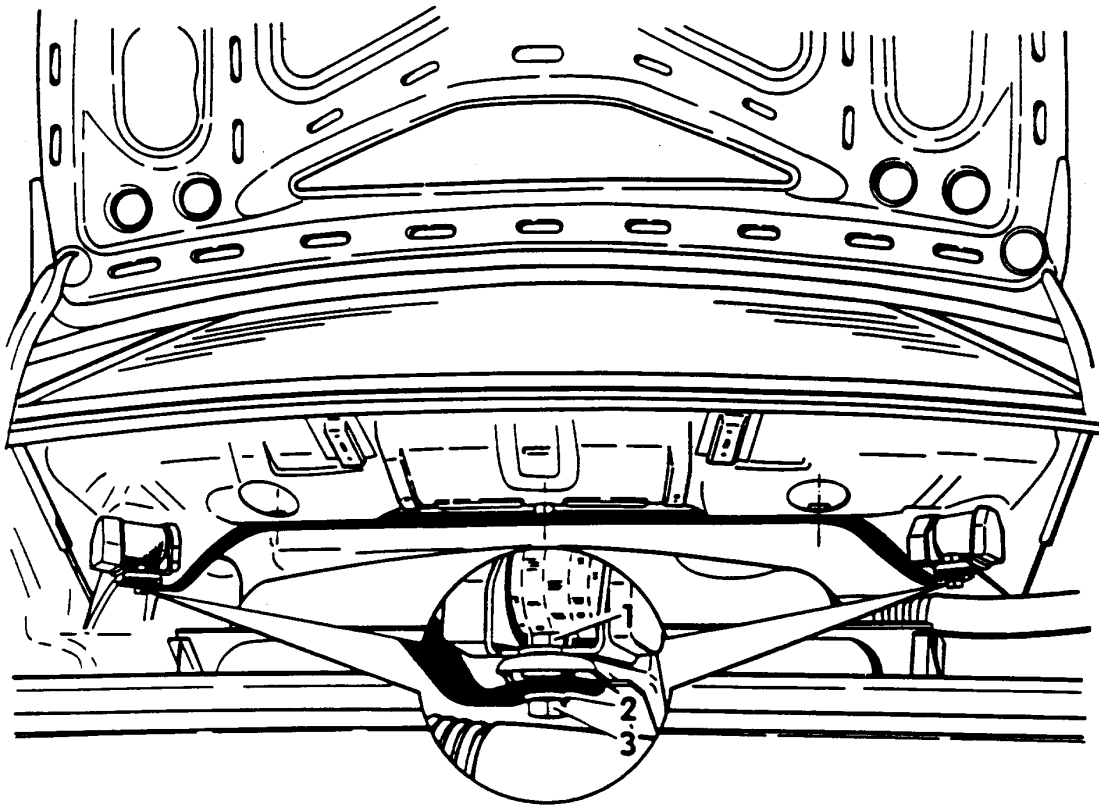
4000S Quattro

August 1985 ►
(Retrofit)

Install mounting support, see page 69-5

- Install hex bolts -1- (5 mm [3/16 in.] longer than production bolts) in belt retractor
- ◆ Tightening torque: 55 ± 5 Nm
(41 ± 4 ft lb)

To install anchoring fixture: ⇒ procedure on page 69-5.



68-305

Coupe GT/Quattro Type 857

Model year 1986 (running change)

Note:

Earlier vehicles cannot be retrofitted with anchoring fixtures because the weld nuts () were not installed in production.*

A - Anchor fixture assembly

◆ see page 69-5 for part numbers

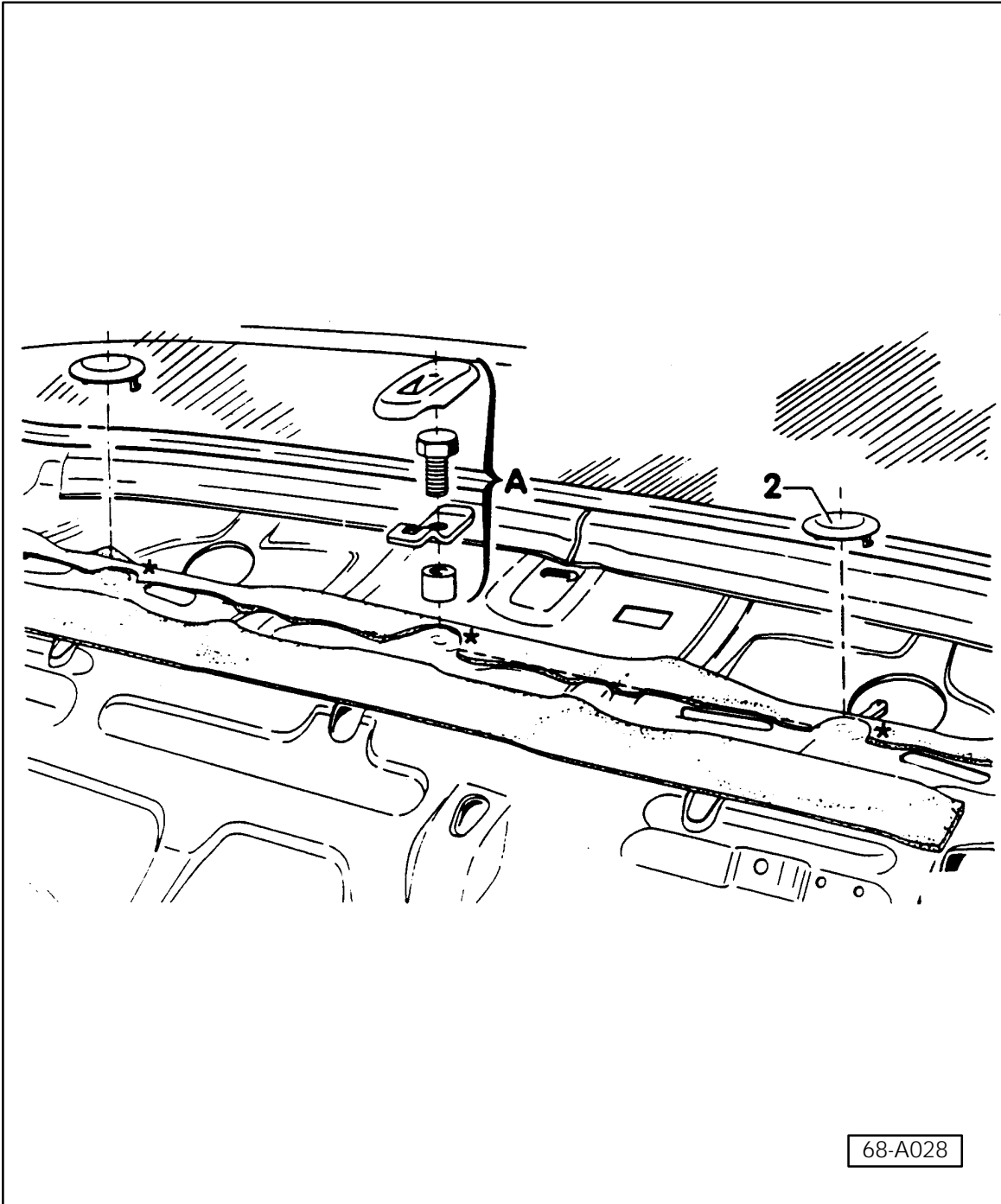
2 - Blanking cap

To add additional fixtures (up to a maximum of three):

- Remove blanking cap -2-
- Assemble anchoring fixture as shown, pointing toward front of vehicle (also ⇒ page 69-9).

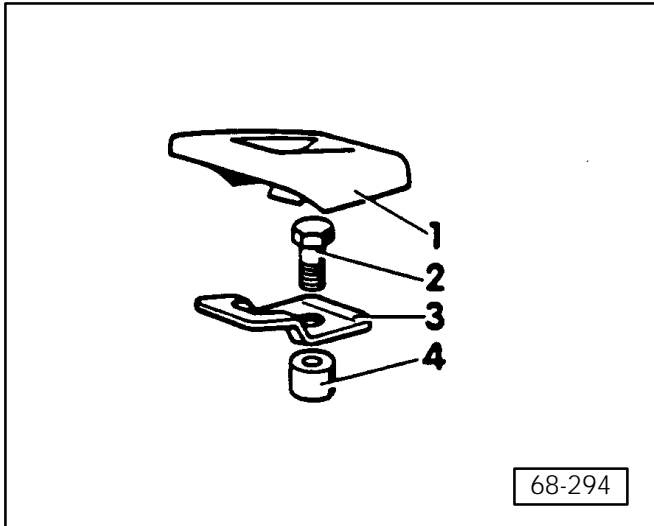
CAUTION!

Part numbers are for reference only. Always check with your Parts Dept. for the latest information.



68-A028

Anchoring fixture kit for 4000 models
See page 69-5 for part numbers



Contents

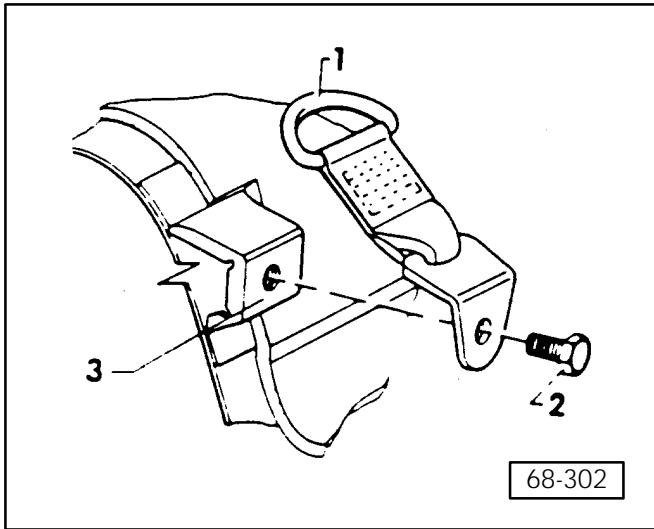
- 1 – Cap
- 2 – Hex head bolt
 - ◆ 25 ± 3 Nm (18 ± 2 ft lb)
- 3 – Anchoring fixture
- 4 – Spacer

CAUTION!

Part numbers are for reference only. Always check with your Parts Dept. for the latest information.

5000 Avant

Three anchoring points are provided on Avant models produced from October 1985. Vehicles produced prior to October 1985 do not have the production-installed weld nut (-3- in illustration below) and cannot be fitted with an anchoring fixture.



Anchoring fixture kit for 5000 Avant model

Contents

- 1 – Anchoring fixture
 - ◆ Part No. 445 887 267B
- 2 – Hex head bolt
 - ◆ Part No. N 010 239 11
 - ◆ 25 ± 3 Nm (18 ± 2 ft lb)
- 3 – Weld nut (not part of kit; factory installed on vehicle)

Note:

The anchoring points will be found under the cargo floor at left, right, and center on the sloped section of the crossmember.

CAUTION!

Part numbers are for reference only. Always check with your Parts Dept. for the latest information.

5000S, CD Turbo

October 1982
(Retrofit)

Up to three anchoring point locations are possible. Exact locations depend on production date:

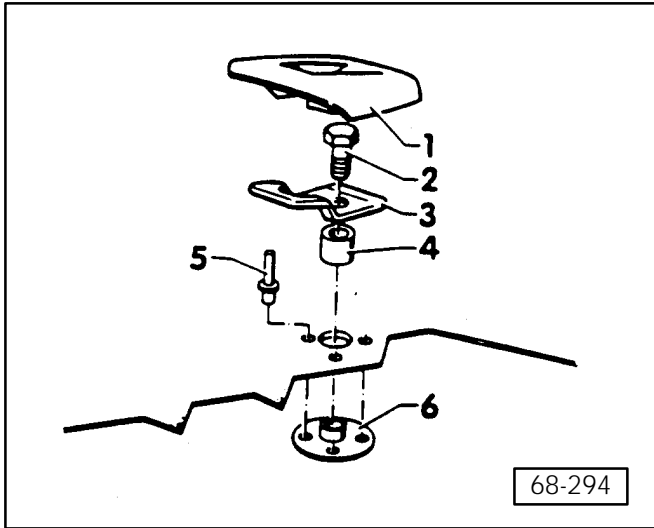
Locations -A- = vehicles ► Oct 1985

Locations -B- = vehicles Oct 1985 ►

- Rivet threaded plate (⇒ page 69-12) to appropriate location under package shelf.
- Cut hole in package shelf approx. 24 mm (1.0 in.) diameter above threaded plate.
- Assemble anchoring fixture pointing toward front of vehicle.
 - ◆ Tightening torque: 25 Nm ± 3 Nm
18 ± 2 ft lb)



68-306



Anchoring fixture kit for 5000S, CD Turbo models

Contents

1 – Cap

- ◆ Part No. 443 887 301 01C, 2KL, 3VF, 6VL

2 – Hex head bolt

- ◆ 25 ± 3 Nm (18 ± 2 ft lb)
- ◆ Part No. N 010 242 22

3 – Anchoring fixture

- ◆ Part No. 443 887 269

4 – Spacer

- ◆ Part No. 810 019 829

5 – Pop rivet

- ◆ Quantity: three
- ◆ Part No. N 905 763 01

6 – Threaded plate

- ◆ Part No. 443 887 077C

CAUTION!

Part numbers are for reference only. Always check with your Parts Dept. for the latest information.

80/90 models

1988 ► 1995 model years

Provision is made in the rear filler panel for the installation of up to three anchoring points. ⇒ installing, page 69-15

Note:

80/90 shown in illustration, A4 similar.

1 - Cap

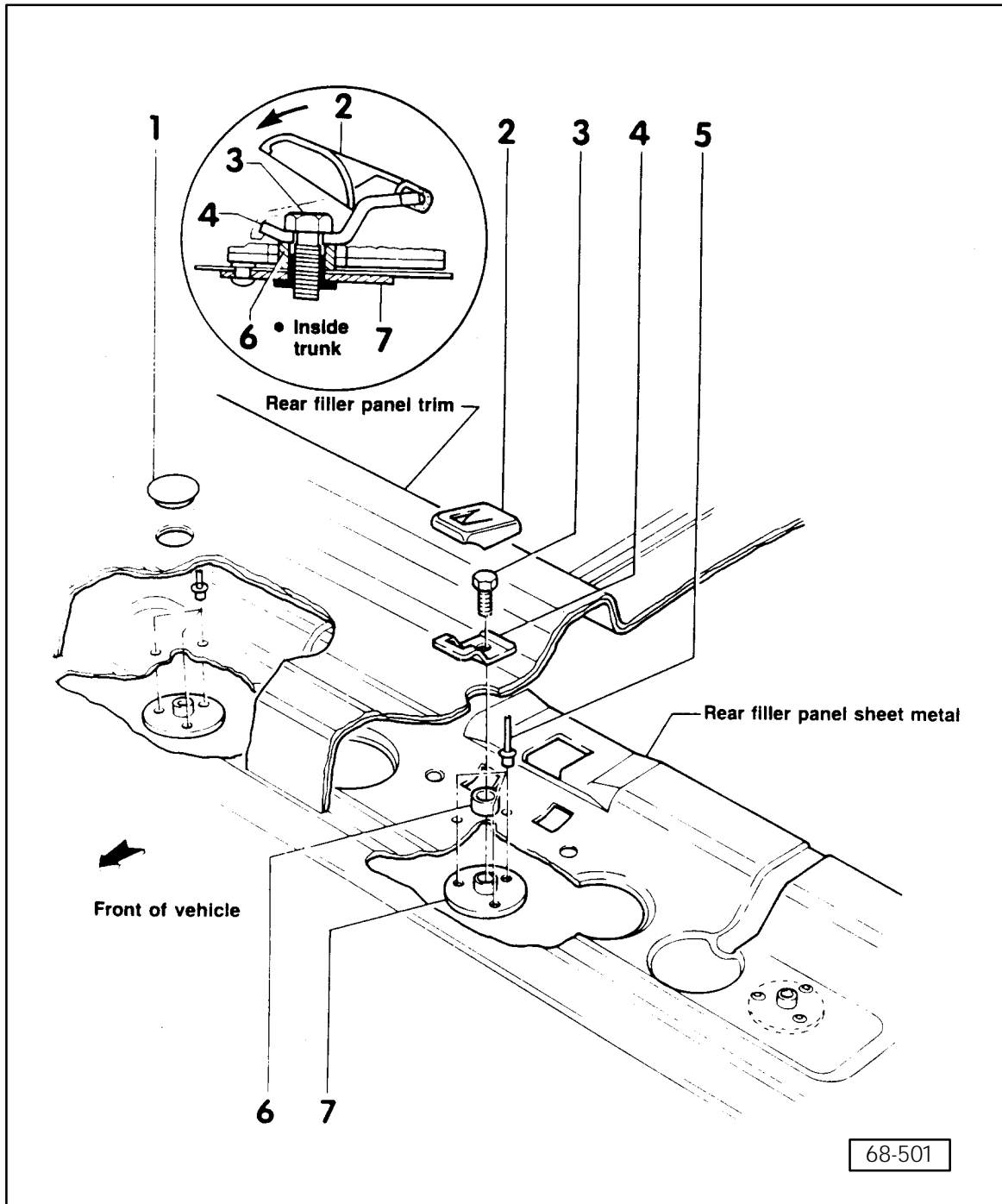
- ◆ Covers hole in filler panel when anchoring fixture is removed
- ◆ Part No. 321 867 164 01C, 6VL, 8AX, 90V

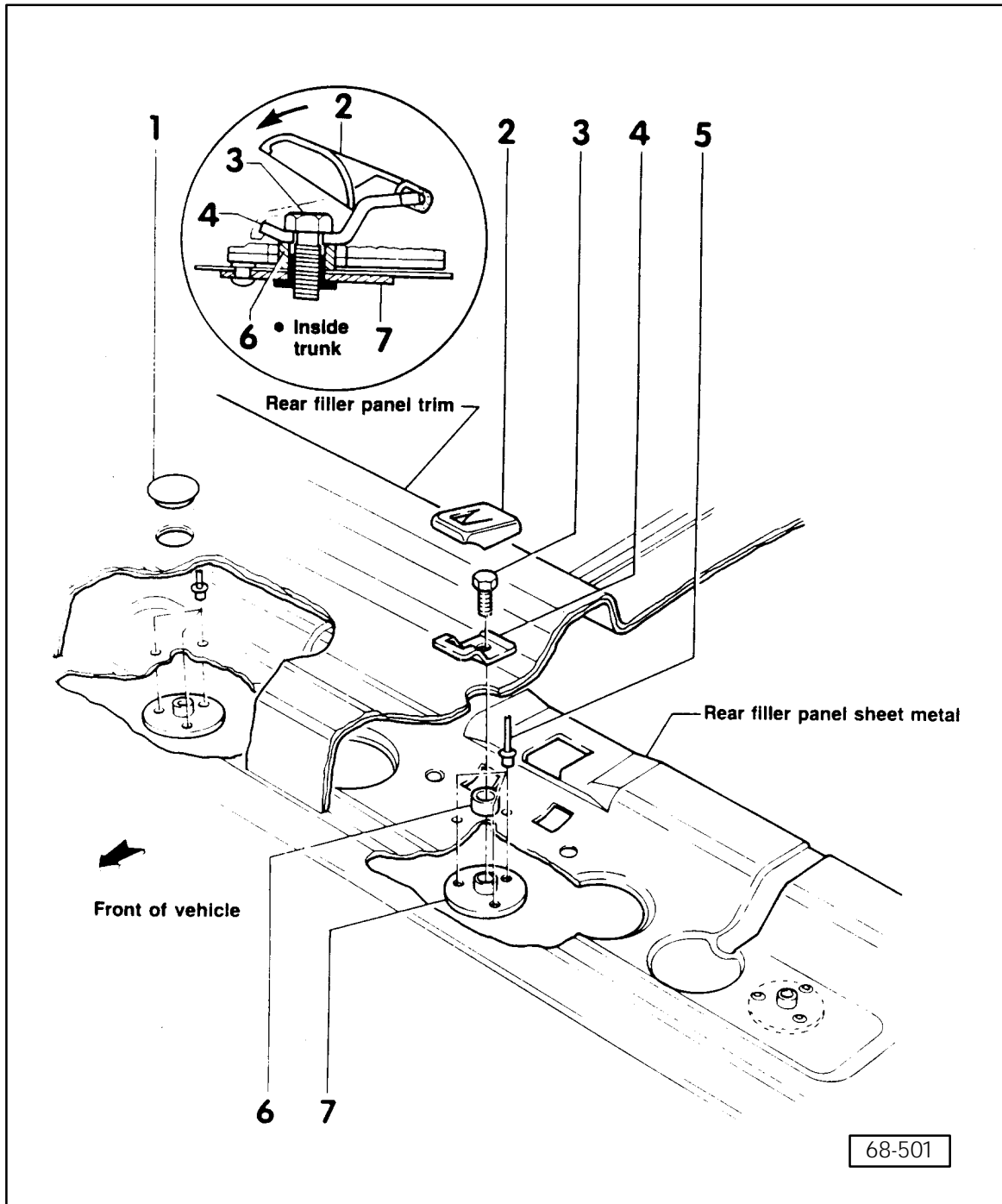
2 - Cover

- ◆ When installing, hook onto front of anchoring fixture, then push down in rear (inset)
- ◆ Part No. 443 887 301 B 01C, P21

3 - Bolt

- ◆ M8 x 20
- ◆ Part No. N 010 240 22





- 4 - Anchoring fixture
 ♦ Part No. 443 887 269
 ♦ Installing, ⇒ page 69-17

- 5 - Pop rivet
 ♦ Secures threaded plate -7- to rear filler panel sheet metal
 ♦ Install from top (inside vehicle)
 ♦ Part No. N 905 763 01

- 6 - Spacer sleeve
 ♦ Part No. 810 019 829

- 7 - Threaded plate
 ♦ Insert from inside trunk, secure with pop rivets -5-
 ♦ Holes are pre-drilled in rear filler panel sheet metal
 ♦ Part No. 443 887 077 C

CAUTION!
Part numbers are for reference only. Always check with your Parts Dept. for the latest information.

80/90 models

1988 ► 1991 model years

Installing anchoring fixture

Note:

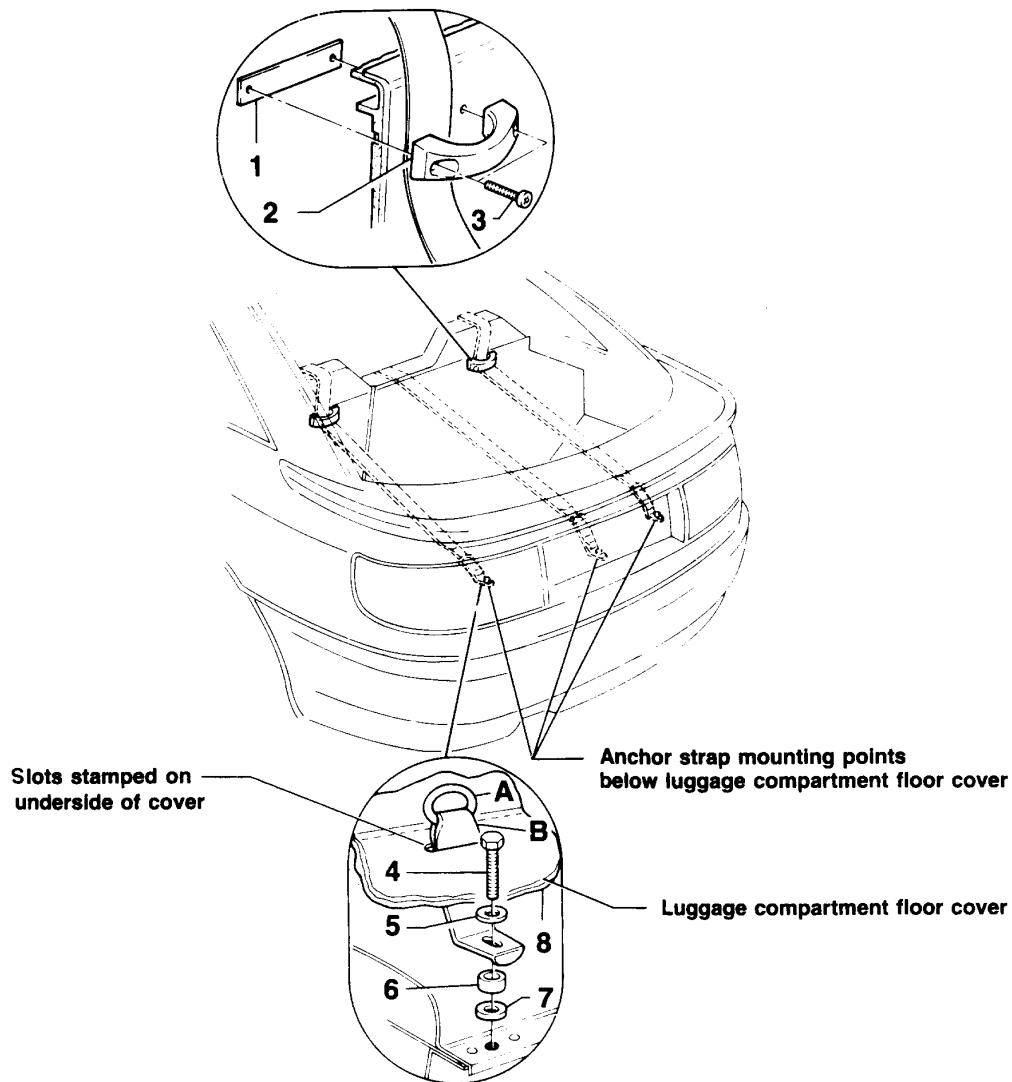
Refer to illustration on pages 69–13 and 69–14.

- Remove rear seat bench and seat back. Open rear lid.
- From inside trunk locate anchorage points for threaded plate -7- and pop rivets -5- in rear filler panel sheet metal. Anchorage points are in line between rear speakers.
- Mark center of anchor point hole on rear of filler panel trim.
- Remove rear filler trim panel.
- Drill 24 mm (approx. 15/16 in.) hole in panel at point marked.
- Using pop rivets -5-, mount threaded plate -7- to underside of filler panel sheet metal. (Install pop rivets from top, inside vehicle)
- Mount spacer sleeve -6- and anchoring fixture -4-.
- Install bolt -3- and tighten to 25 Nm (18 ft lb).
- Install cover -2- (see illustration inset) onto anchoring fixture.

Coupe Quattro

1990 ► 1991 model years

Up to three anchoring points available under luggage compartment floor ⇒ installing, page 69-17



68-502

- 1 - Reinforcement plate
 - ◆ Part No. 171 861 641
 - ◆ Only used with outer (left/right) anchor points
- 2 - Belt guide
 - ◆ Part No. 895 887 827 01C
 - ◆ Only used with outer anchor points and with plate -1-
- 3 - Screw
 - ◆ Part No. N 014 144 4
- 4 - Bolt
 - ◆ Part No. N 010 247 8
- 5 - Washer
 - ◆ Part No. N 901 791 02
- 6 - Spacer sleeve
 - ◆ Part No. 810 019 829
- 7 - Washer
 - ◆ Part No. N 901 791 02
- 8 - Luggage compartment floor
 - ◆ Slots for anchoring eyes -A- on anchor strap -B- must be cut out

Coupe Quattro models

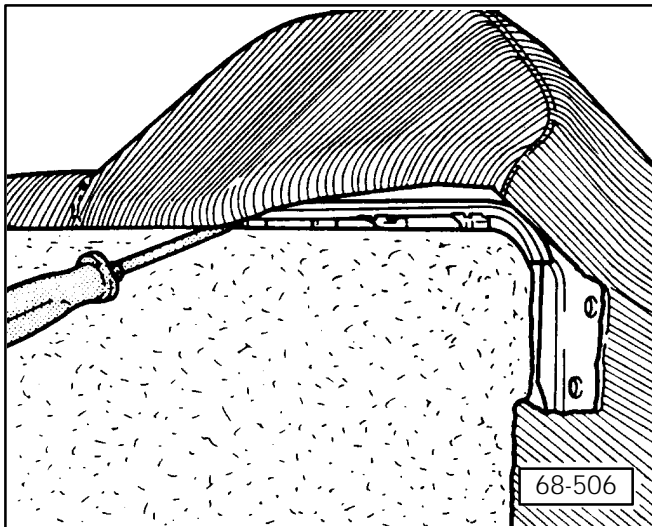
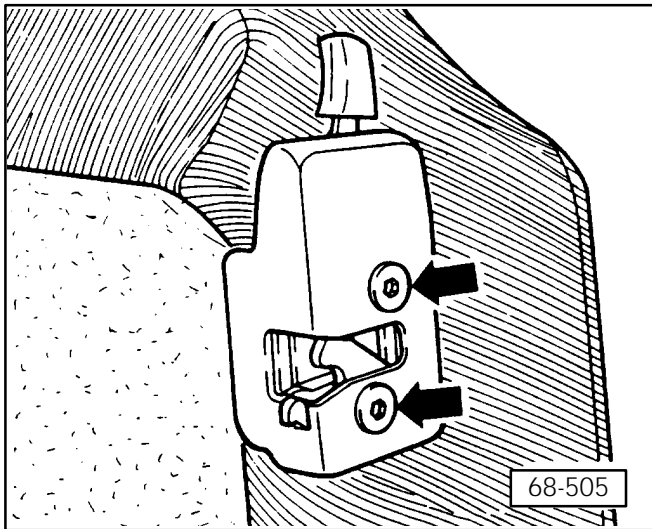
1990 ► 1991 model years

Installing anchoring fixture

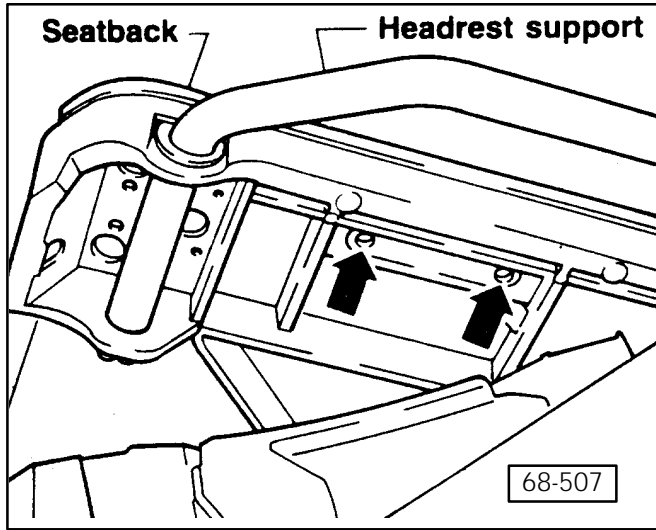
Notes:

- ◆ Refer to illustration on page 69-16.
- ◆ Installation of outer (left/right) anchor point is described. Center anchor point does not require reinforcement plate, removal of seat back lock or partial removal of seat back cover.

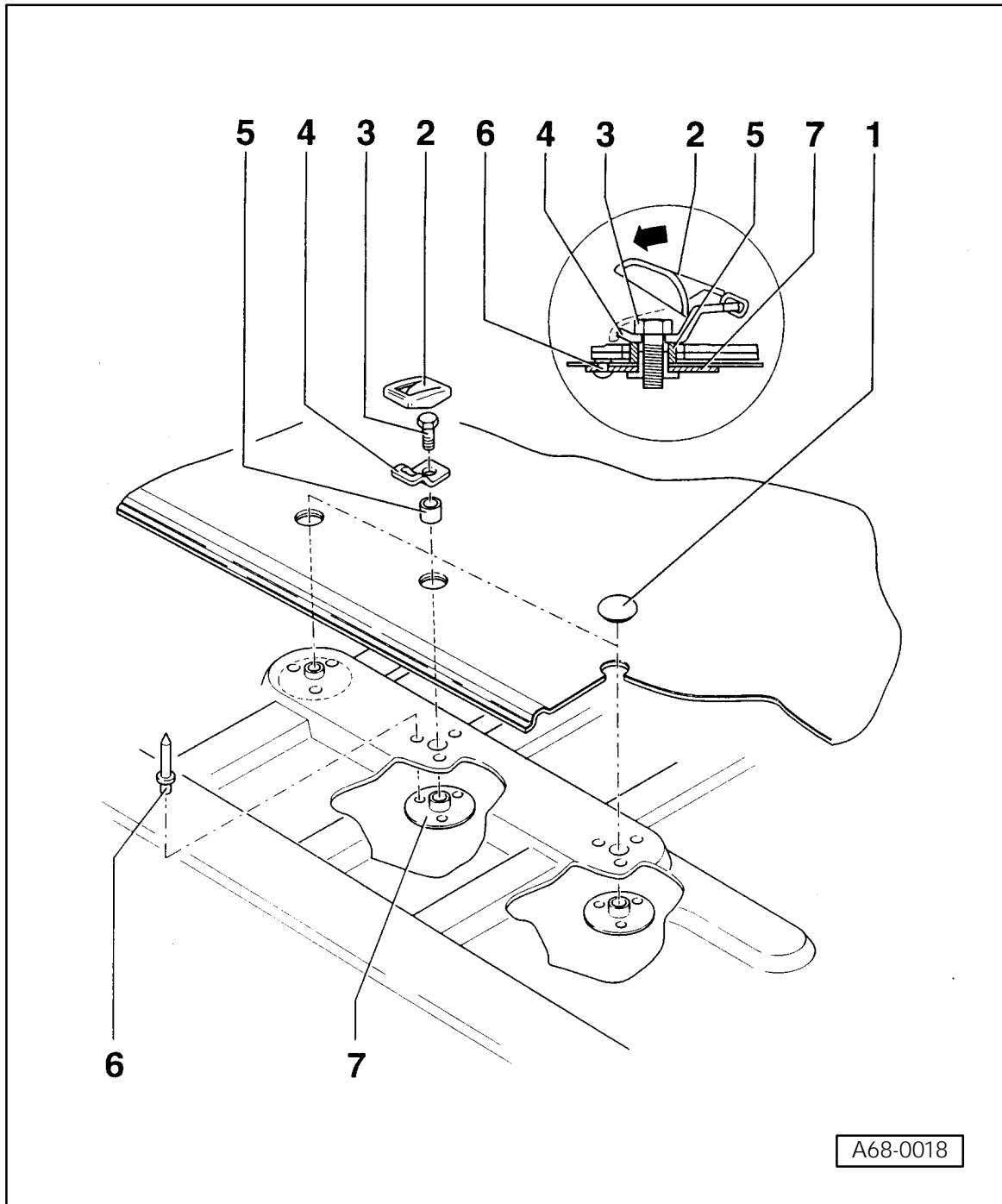
- ▲ – Remove bolts (arrows), remove rear seat back lock.
Tightening torque: 9 ± 2 Nm (80 ± 18 in. lb)



- ▲ – Carefully pry off seat back cover



- ▶ – Using a 6.0 mm (15/64 in.) drill bit, drill through holes (arrows) stamped in seatback below headrest support.
- Install reinforcement plate -1- and secure with belt guide -2-.
- Locate, by feel, slots stamped into underside of luggage compartment floor cover.
- Using a utility knife, cut out slots for anchor strap(s) as necessary.
- Mount anchor strap as shown (lower inset on page 69-16).



A4 models

1996 ► model year

100/200/A6/S4/S6 models
(except wagon)

model year 1992 ►

Provision is made in the rear filler panel for the installation of up to three anchoring points. ⇒ installing, page 69-21

1 - Cap

- ◆ Covers hole in filler panel when anchoring fixture is removed
- ◆ Part No. 321 867 164 01C, 6VL, 8AX, 90V

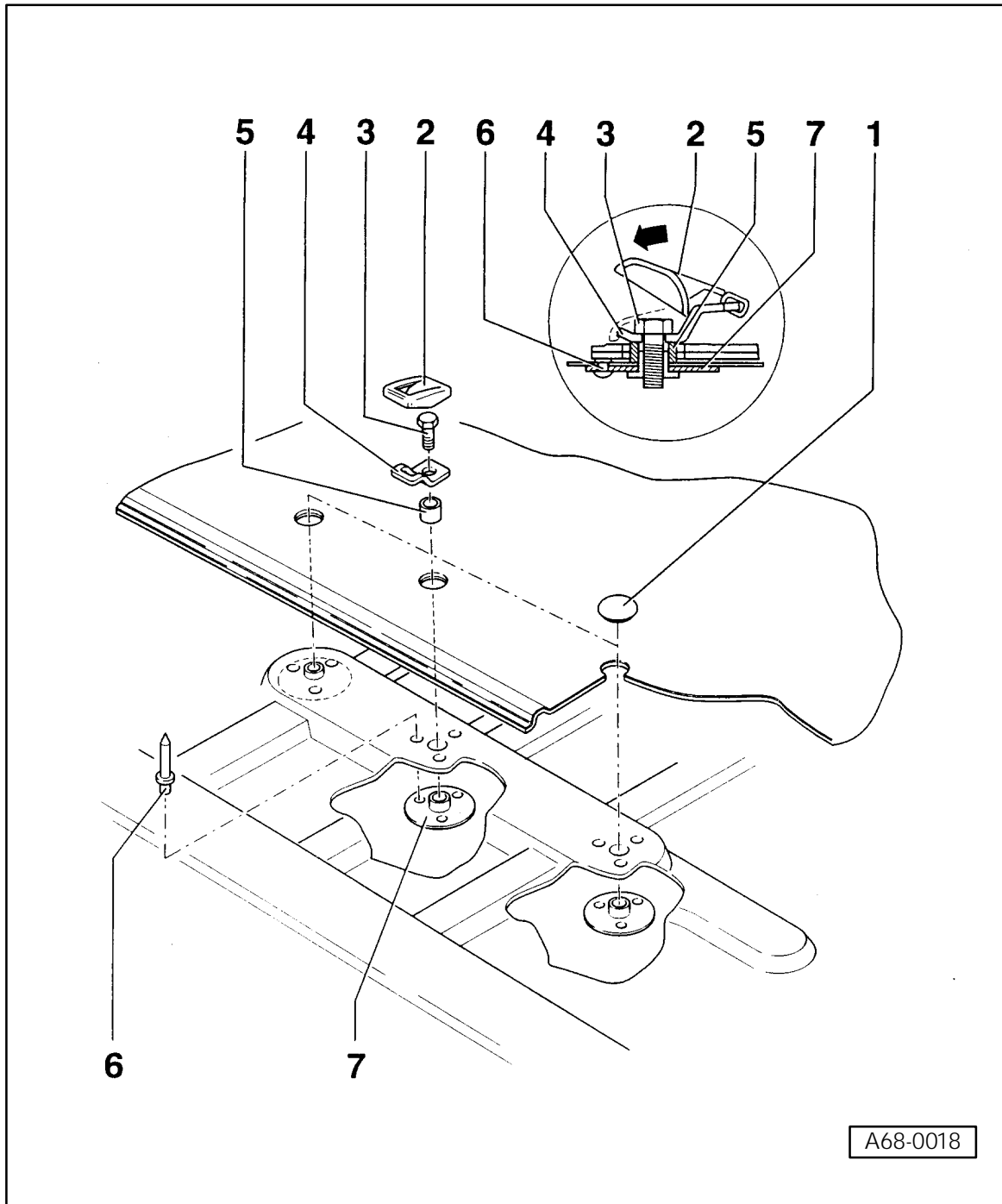
2 - Cover

- ◆ When installing, hook onto front of anchoring fixture, then push down in rear (inset)
- ◆ Part No. 443 887 301 B 01C, P21

3 - Bolt

- ◆ M8 x 20
- ◆ Part No. N 010 240 22

A68-0018



- 4 - Anchoring fixture
 - ◆ Part No. 443 887 269
 - ◆ Installing, ⇒ page 69-21
 - ◆ Install from top (inside vehicle)
- 5 - Spacer sleeve
 - ◆ Part No. 810 019 829
- 6 - Pop rivet
 - ◆ Secures threaded plate -7- to rear filler panel sheet metal
 - ◆ Part No. N 905 763 01
- 7 - Threaded plate
 - ◆ Insert from inside trunk, secure with pop rivets -5-
 - ◆ Holes are pre-drilled in rear filler panel sheet metal
 - ◆ Part No. 443 887 077 C

CAUTION!
Part numbers are for reference only. Always check with your Parts Dept. for the latest information.

A68-0018

A4 models

1996 ► model year

100/200/A6/S4/S6 models (except wagon)

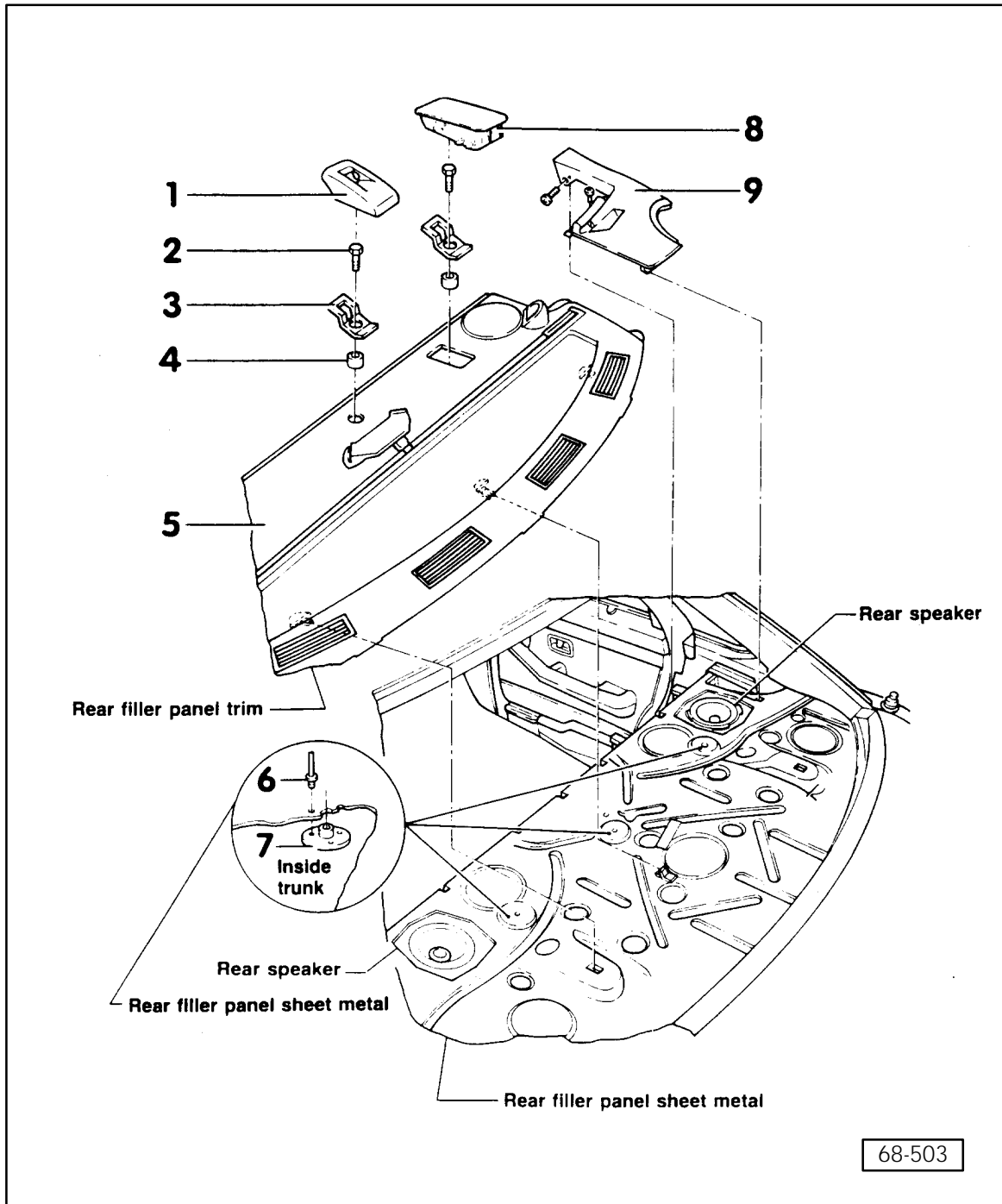
model year 1992 ►

Installing anchoring fixture

Note:

Refer to illustration on pages 69–19 and 69–20.

- Remove rear seat bench and seat back. Open rear lid.
- From inside trunk locate anchorage points for threaded plate -7- and pop rivets -5- in rear filler panel sheet metal. Anchorage points are in line between rear speakers.
- Mark center of anchor point hole on rear of filler panel trim.
- Remove rear filler trim panel.
- Drill 24 mm (approx. 15/16 in.) hole in panel at point marked.
- Using pop rivets -5-, mount threaded plate -7- to underside of filler panel sheet metal. (Install pop rivets from top, inside vehicle)
- Mount spacer sleeve -6- and anchoring fixture -4-.
- Install bolt -3- and tighten to 25 Nm (18 ft lb).
- Install cover -2- (see illustration inset) onto anchoring fixture.



100/200 models

- ▶ 1991 model year
(except wagon)

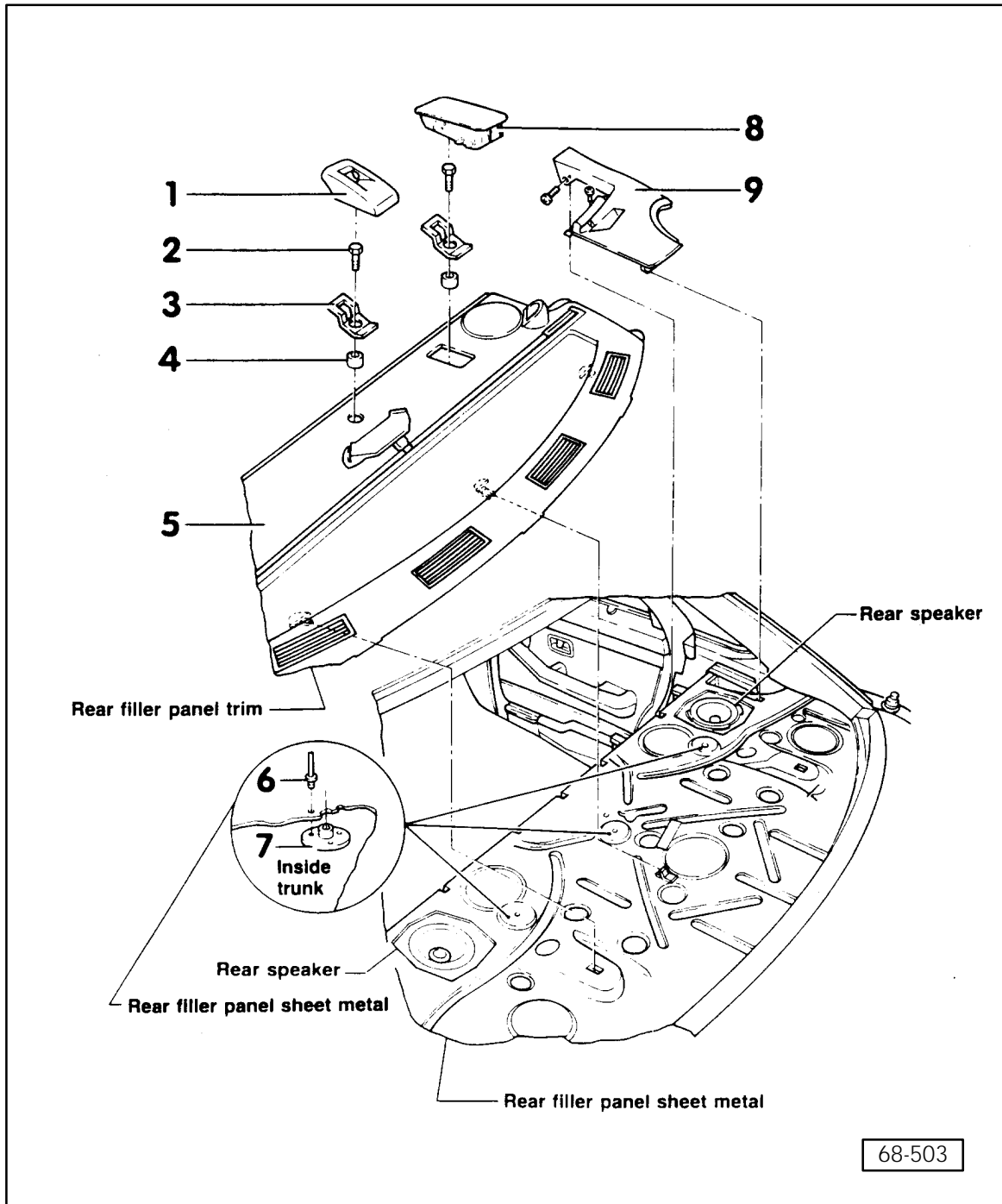
V8 Quattro

- ▶ 1994 model year

Provision is made in the rear filler panel for the installation of up to three anchoring points.

- 1 - Cover
 - ◆ When installing, hook onto front of anchoring fixture, then push down in rear
 - ◆ Part No. 443 887 301 B 01C, P21
- 2 - Bolt
 - ◆ 25 Nm (18 ft lb)
 - ◆ M8 x 22
 - ◆ Part No. N 010 241 18
- 3 - Anchoring fixture
 - ◆ Part No. 443 887 269
- 4 - Spacer sleeve
 - ◆ Part No. 811 857 937
- 5 - Rear filler panel trim

68-503



6 - Pop rivet

- ◆ Secures threaded plate -7- to rear filler panel sheet metal
- ◆ Install from top (inside vehicle)
- ◆ Part No. N 905 763 01

7 - Threaded plate

- ◆ Insert from inside trunk, secure with pop rivets -6- from inside vehicle
- ◆ Holes are pre-drilled in rear filler panel sheet metal
- ◆ Holes are located inline between rear speakers
- ◆ Part No. 443 887 077 C

8 - Cap

- ◆ Covers anchor point when not in use or removed from vehicle

9 - Rear seat belt cover

- ◆ See Repair Group 68

CAUTION!
Part numbers are for reference only. Always check with your Parts Dept. for the latest information.

68-503

100/200 models

- ▶ 1991 model year (except wagon)

V8 Quattro

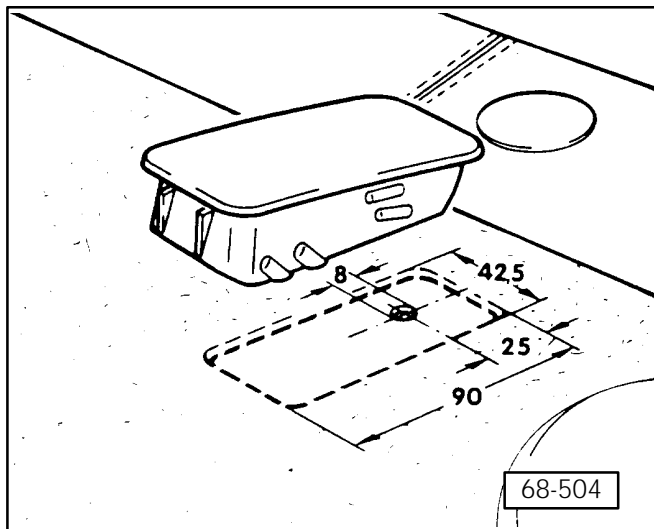
- ▶ 1994 model year

Installing anchoring fixture

Note:

Refer to illustration on pages 69-22 and 69-23.

- Remove rear seat bench and seat back.
- Open rear lid.
- From inside trunk, locate anchorage points for threaded plate -7- and pop rivets -6- in rear filler panel sheet metal.
- Mark center of anchor point hole on rear of filler panel trim.
- Remove rear filler panel trim panel.
- Drill a 8.0 mm (5/16 in.) starter hole in rear filler panel trim panel at center mark.
- ◀ - Enlarge hole to dimensions shown (all figures shown in mm).



CAUTION!

Threaded plate -7- is only to be riveted to the rear filler panel sheet metal.

- Using pop rivets -6-, mount threaded plate -7- to underside of filler panel sheet metal (see inset in illustration).
- Mount spacer sleeve -4- and anchoring fixture -3-.
- Install bolt -2- and tighten to 25 Nm (18 ft lb).
- Install cover -1- over anchoring fixture.

Note:

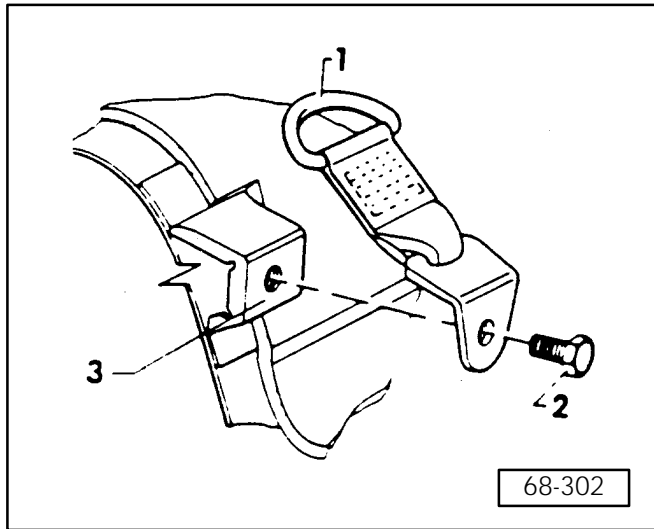
Cap -8- is only used to cover hole in rear filler panel trim when anchoring fixture is removed.

100 Wagon, A6 Wagon

Up to three anchoring points are possible.

Note:

The anchoring points can be found under the rear cargo floor at left, right, and center on the sloped section of the crossmember.



◀ Anchoring fixture for 100 Wagon, A6 Wagon models

1 – Anchoring fixture

◆ Part No. 445 887 267B

2 – Hex head bolt

◆ Part No. N 010 239 11

◆ 25 ± 3 Nm (18 ± 2 ft lb)

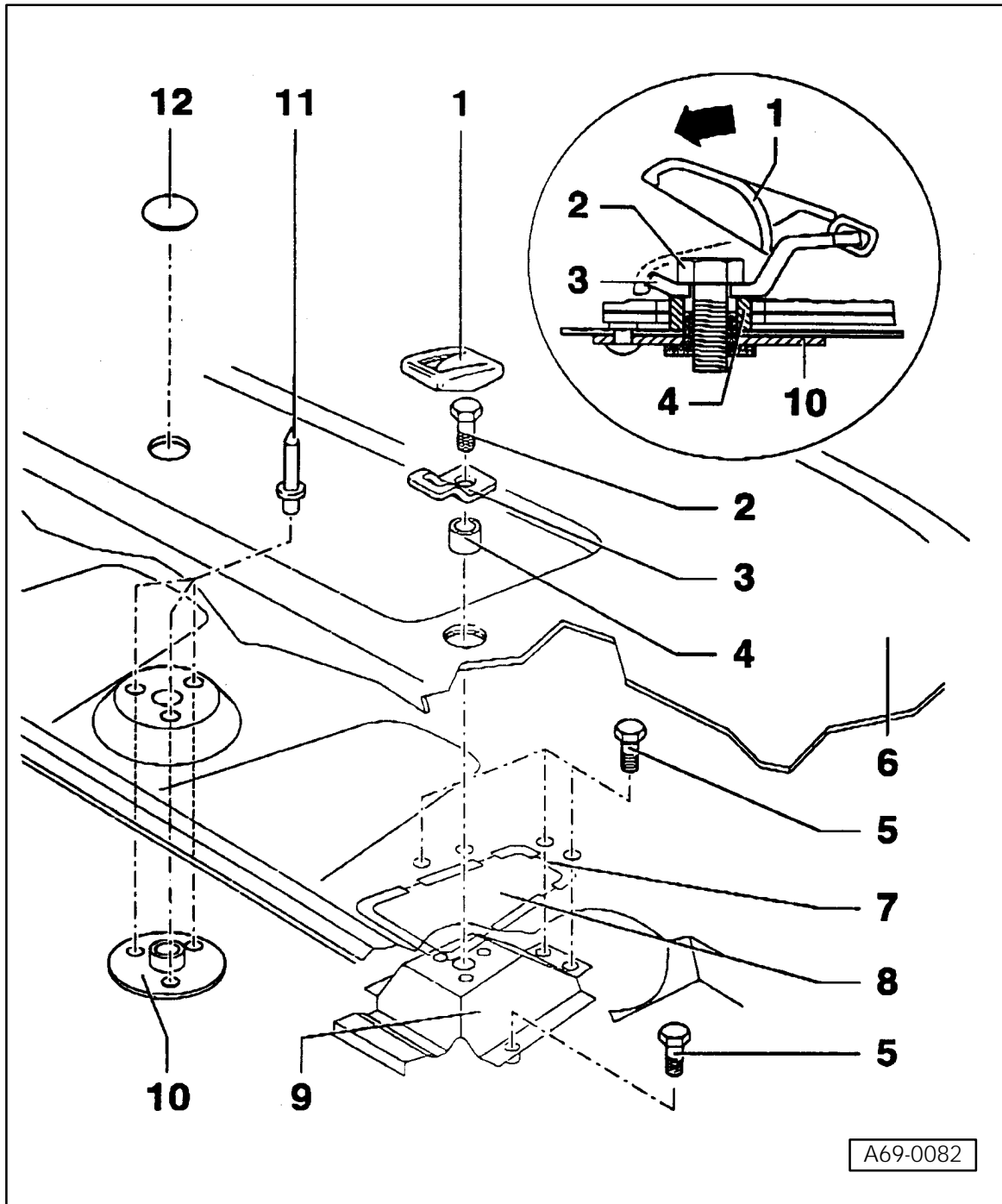
3 – Nut

◆ Part No. N 904 085 01

◆ Fits into hex-shaped hole in body

CAUTION!

Part numbers are for reference only. Always check with your Parts Dept. for the latest information.

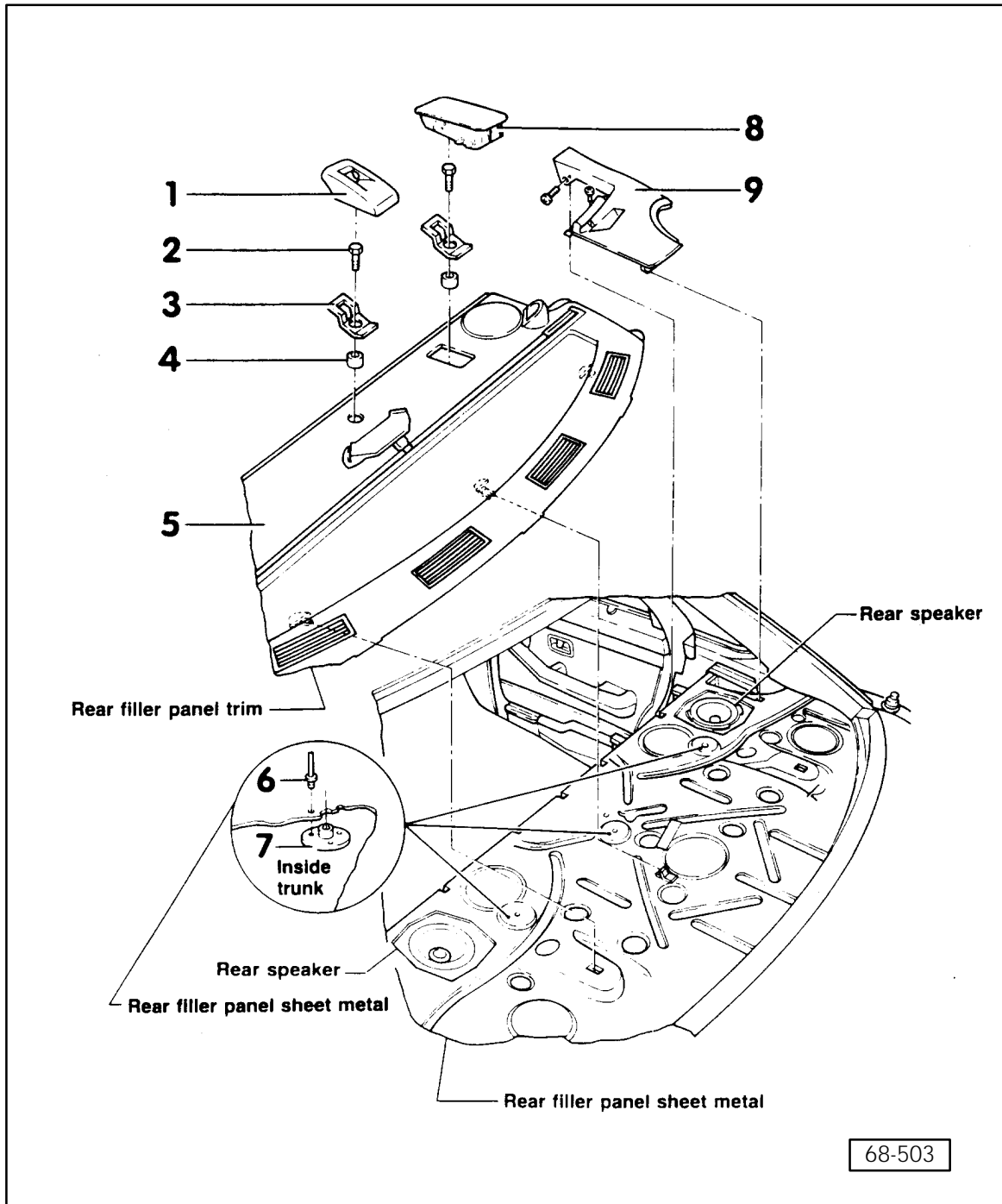


A8 models

1997 ► **model year**

Provision is made in the rear filler panel for the installation of up to three anchoring points.

- 1 - Cover
 - ◆ When installing, hook onto front of anchoring fixture, then push in direction of arrow and downward
 - ◆ Part No. 443 887 301 B 01C, P21
- 2 - Bolt
 - ◆ 23 Nm (17 ft lb)
 - ◆ M8 x 20
 - ◆ Part No. N 010 240 22
- 3 - Anchoring fixture
 - ◆ Part No. 443 887 269
- 4 - Spacer sleeve
 - ◆ Part No. 810 019 829
- 5 - Bolt
 - ◆ 9.5 Nm (84 in. lb)
 - ◆ Qty: 5 for each bracket (item -9-)
 - ◆ Install from inside vehicle



6 - Rear filler panel trim

7 - Separation line

8 - Rear filler panel

9 - Bracket

- ◆ Slide bracket in from luggage compartment and bolt from top (vehicle interior) with bolts (item -5-)

CAUTION!

Threaded plate must always be installed from below (luggage compartment side).

10 - Threaded plate

- ◆ Installed from below (luggage compartment side) with rivets (item -11-) installed from above (vehicle interior)

11 - Pop rivet

- ◆ Qty: 3 for each plate
- ◆ Installed from top (vehicle interior)

12 - Cap

- ◆ Covers hole in shelf when anchoring fixture not installed.

68-503

A8 models

1997 ► model year

Installing anchoring fixture

Note:

◆ *Refer to illustration on pages 69–27 and 69–28.*

◆ *As needed 1, 2, or 3 anchoring fixtures can be installed.*

- Remove rear filler panel trim.
- Using a body saw cut panel -8- at separation line -7- (for outboard locations).
- Install threaded plate -10- to bracket -9- and/or to center anchorage location with pop rivets -6-.

CAUTION!

Threaded plate must always be installed from below (luggage compartment side).

- Install threaded plate and bracket to panel with bolts -5- and tighten to 9.5 Nm (84 in. lb)
- Install rear filler panel trim and mark center point of mounting hole(s) on trim panel from inside luggage compartment.
- Remove rear filler panel trim and cut out 23 mm (0.90 in.) hole at each marked location.
- Install rear filler panel trim.

- Mount spacer sleeve -4- and anchoring fixture -3-.
- Install bolt -2- and tighten to 23 Nm (17 ft lb).
- Install cover -1- over anchoring fixture.

Note:

Cap -12- is only used to cover hole in rear filler panel trim when anchoring fixture is removed.

CAUTION!

Part numbers are for reference only. Always check with your Parts Dept. for the latest information.