

BentleyPublishers™
.com



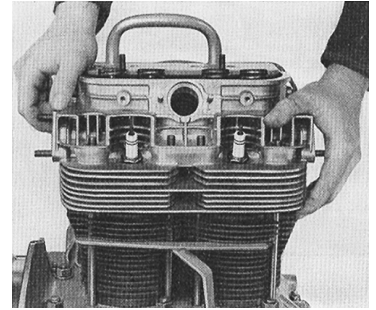
Workshop Manual

VOLKSWAGEN TYPE 3

1961-1967

Volkswagen Type 3 Workshop Manual: 1961-1967

Price: \$109.95
Bentley Stock No. V367
Publication Date: 2004.aug.30
ISBN 0-8376-1192-X
Volkswagen Part No. LPV 800 139
1152 pages, over 2000 figures,
illustrations, and diagrams
Softcover 8-3/8 in. x 11 in.



*Removing and
Installing Cylinder
Head,
Section M, Engine
and Clutch*

Now available for the first time as a single volume is the **Volkswagen Type 3 Workshop Manual: 1961-1967** for models sold in the USA and Canada. This manual is a compilation of the original Volkswagen official service and repair information. This historical archive edition covers procedures for routine maintenance, troubleshooting, repair and rebuilding.

Features:

- Engine and cylinder head service, repair and reconditioning, including bench testing procedures and specifications for 1500cc and 1600cc motors.
- Solex 32 PHN, 32 PHN-1 single carburetors, 32 PDSIT 2/3 dual carburetors, as well as fuel pump troubleshooting, rebuilding, and adjustment.
- Transmission removal, rebuilding, and adjustment, including early and later versions.
- Frame and floor repair with measurements and detailed cutting, alignment and welding instructions.
- Body repair and replacement procedures, including the sliding sunroof. Detailed painting preparation and procedures.
- Wiring diagrams identified by year and model.
- Running production changes and updates are noted in the text by manufacturing date, chassis number, engine number or part number.
- Detailed explanations of the various systems, with exploded views, cutaways and diagrams.
- Required workshop equipment, tools, and equipment for local manufacture listings.
- Troubleshooting tables for clutch, carburetor, fuel pump, steering, disc and drum brakes, generator, starter, and wipers.
- Maintenance and lubrication charts and procedures.



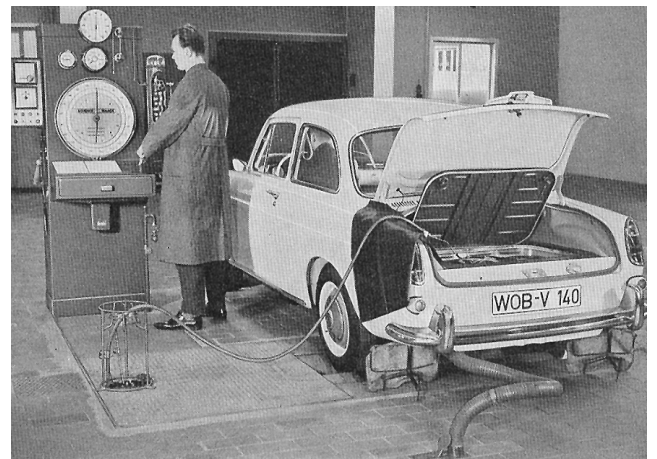
*Engine Removal
and Installation,
Section M, Engine
and Clutch*

Models covered:

**1500, 1500A, 1500N, 1500S, 1600, 1600TL
Sedan (Notchback and Fastback)
Variant (Station Wagon)
1500 Karmann Ghia Coupe**

Engines covered:

**1493cc
1584cc**



Checking Fuel Consumption, Section K, Fuel System