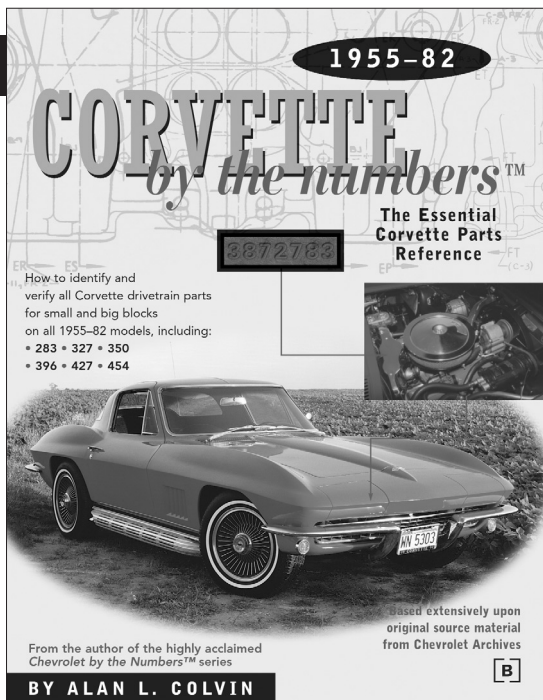


Available April 2002



www.BentleyPublishers.com

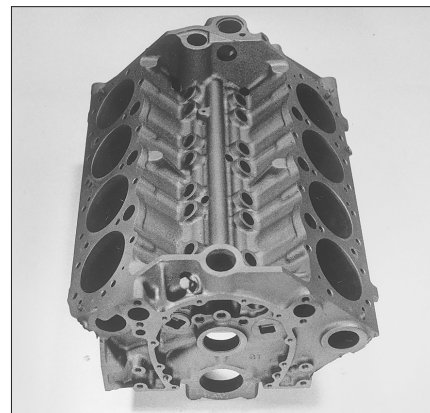
**Corvette by the Numbers™
 1955-1982**

The Essential Corvette Parts Reference

**How to identify and verify all Corvette Drivetrain parts for small and big blocks on all 1955-82 models, including:
 •283 •327 •350 •396 •427 •454**

by Alan L. Colvin

Retail price: \$49.95
 Bentley Stock No. GCCN
 ISBN 0-8376-0288-2
 GM Part No. 12497977
 596 pages
 Over 1,000 B&W photographs, illustrations, and diagrams
 Softcover, 8-3/8 x 11"



(1) Overall view of #3703524.
 (2) This photo shows the casting number H 18 5 (Aug. 18, 1965). Most Corvette water pumps use these types of casting dates.

Corvette by the Numbers™ is the only authoritative reference for identifying and verifying, by casting number, the correct engine and drivetrain parts for your exact model Corvette. From the author of the highly acclaimed *Chevrolet by the Numbers*™ book series, *Corvette by the Numbers*™ documents part casting numbers and applications using original source material from General Motors Archives. No other book has this authoritative factory information, including photographs, engineering blueprints, technical service bulletins, and build sheets.

Part numbers can tell you what parts fit, but they can't tell you what part your car was originally manufactured with. Only casting numbers can tell you what a part's exact model and year application is, when the part was manufactured, and which plant made it. This book shows you where to look for casting numbers on parts and how to decipher their codes so you can be sure you have the correct part for your car.

The *Chevrolet by the Numbers*™ book series set the standard in Chevrolet parts identification. This same tradition has been continued with the release of *Corvette by the Numbers*™. In this new book Colvin has managed to go beyond the Chevy books by including information such as Delco starters and radios, LOF glass codes, and year-by-year model changes.

Restoring your Corvette to original factory specifications? You'll find the casting numbers that correspond to your car's Vehicle Identification Number to help you avoid buying the wrong parts. Buying a Corvette? You'll find how to tell if it really is a "matching numbers" car. Interested in Corvette history? There are fascinating stories that explain everything from mid-year running changes to production idiosyncrasies. Whether you are new to the Corvette hobby or a 15-year Bloomington Gold judge, you can learn something new from *Corvette by the Numbers*™.

Table of Contents

Introduction			
Chapter 1.	Vehicle Identification	Chapter 17.	Fuel Injection
Chapter 2.	Engine Code	Chapter 18.	Delco Starter
Chapter 3.	Engine Block	Chapter 19.	Clutch Housing
Chapter 4.	Crankshaft	Chapter 20.	Crankshaft Harmonic Balancer
Chapter 5.	Cylinder Head	Chapter 21.	Delco Radio
Chapter 6.	Connecting Rod	Chapter 22.	Hoses
Chapter 7.	Carburetor	Chapter 23.	LOF Glass Codes
Chapter 8.	Intake Manifold	Chapter 24.	Year by Year Model Changes
Chapter 9.	Exhaust Manifold		
Chapter 10.	Water Pump		
Chapter 11.	Distributor		Index
Chapter 12.	Camshaft		Art Credits
Chapter 13.	Generator/Alternator		About the Author
Chapter 14.	Transmission		Acknowledgments
Chapter 15.	Rear Axle/Differential		Important Data for my Corvette
Chapter 16.	Wheels		Reader Response Form